



Shenzhen Sonka Medical Technology Co., Limited.

COMPUTER NURSING TROLLEY WORKSTATION

www.sonkahealth.com / www.sonkascale.com



SK-E500



SK-E300



0755-33556301
Tel 400-048-8836



SK-E500 / SK-E300 | Computer Nursing Trolley Workstation

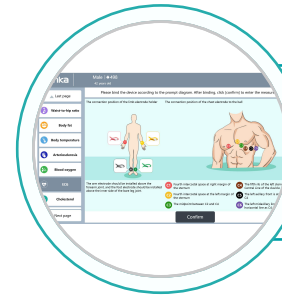
Features



MULTI FUNCTION
meeting multiple
functions of ward
inspection



FULL COLOR
TOUCH SCREEN
Easy to view test
data



Data upload
Real time data
upload, convenient
to view anytime and
anywhere



Medical Grade
ABS Material,
Safe And
Reliable



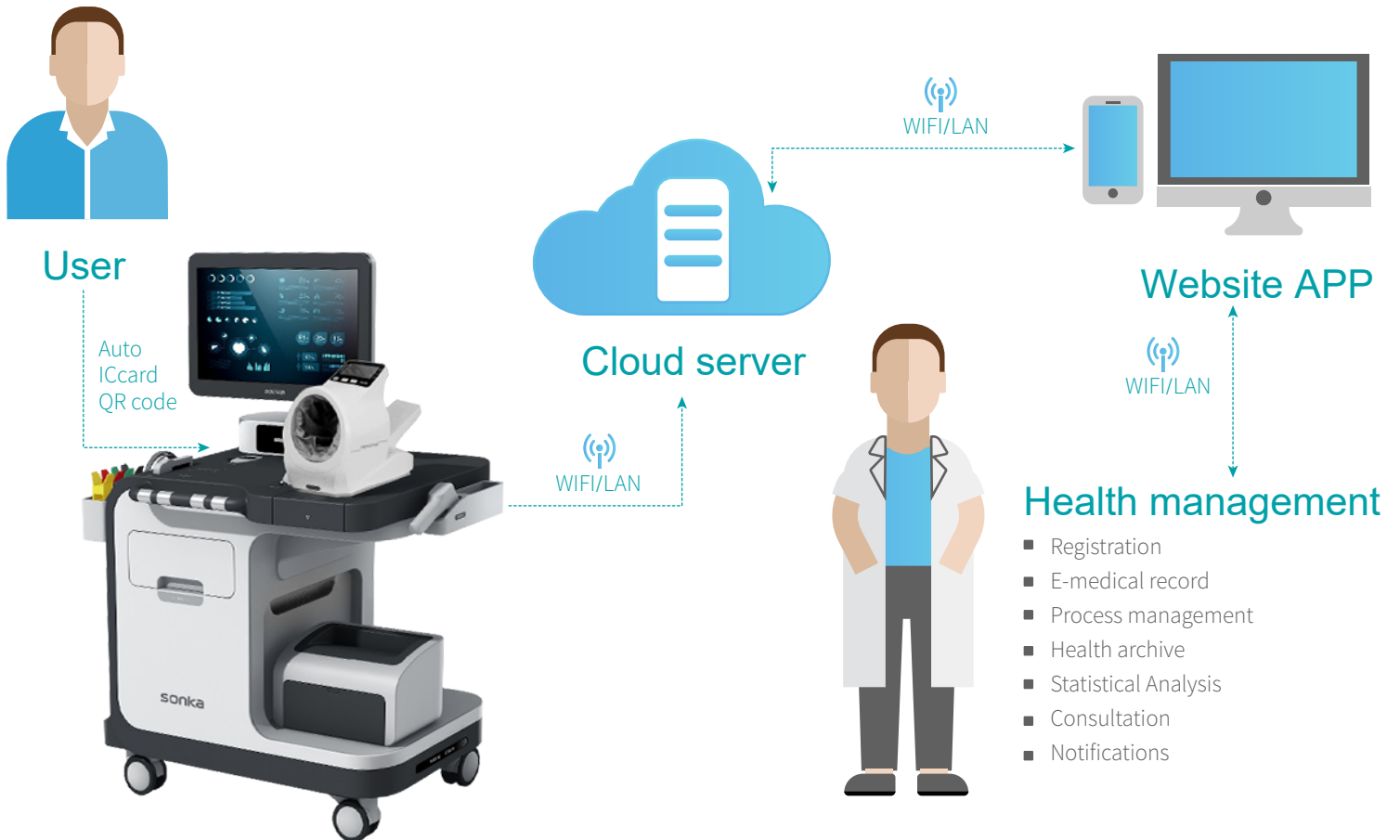
A4 printing
Link printing,
quick printing
report



Easy to move
Wheeled for easy
carrying

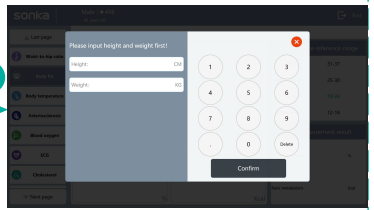
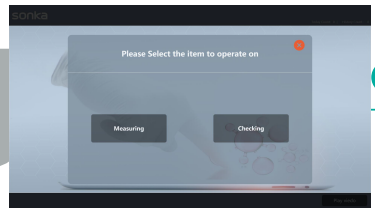
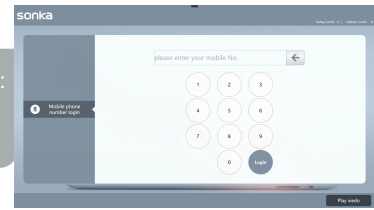
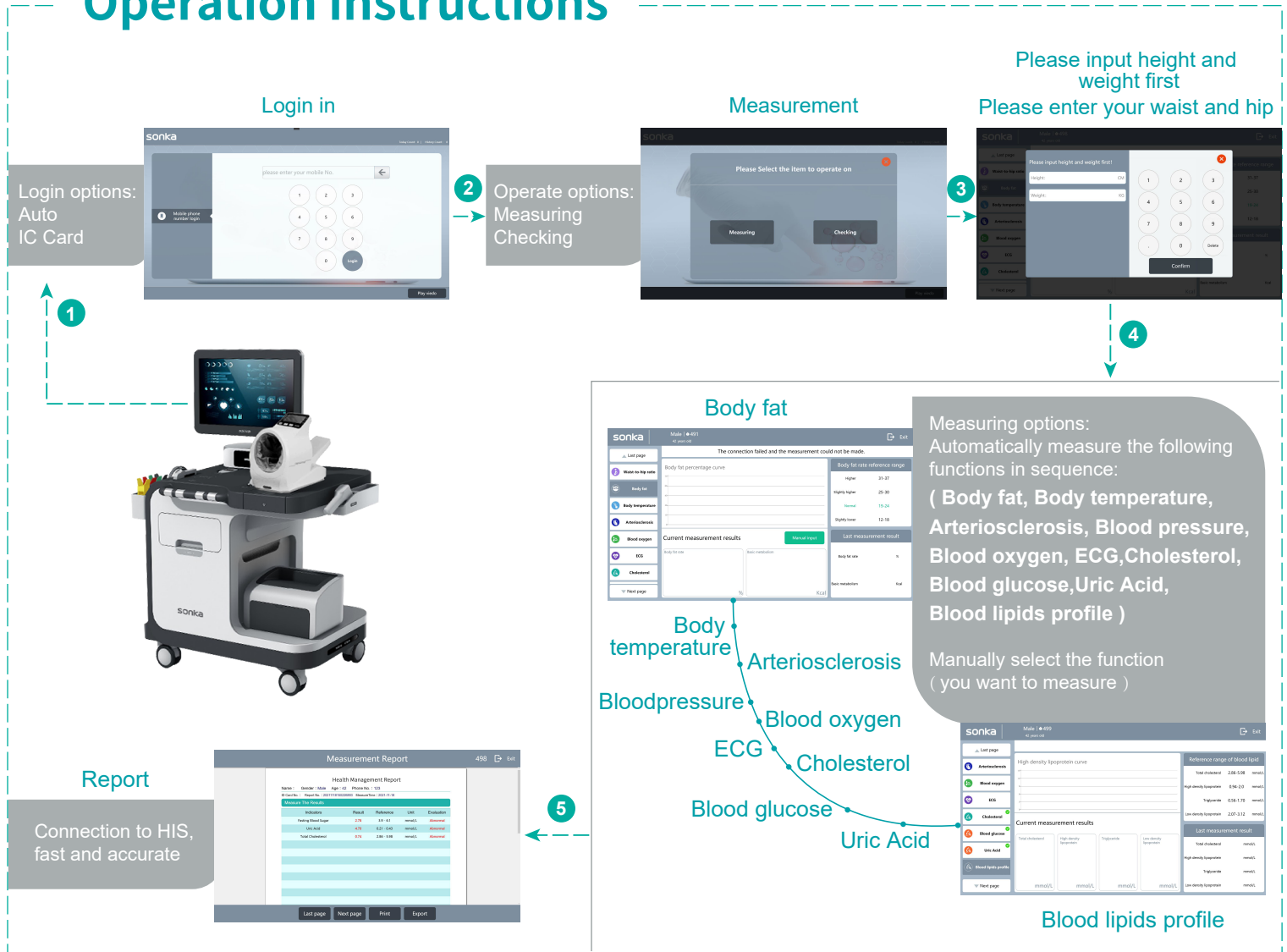
SK-E500 / SK-E300 | Computer Nursing Trolley Workstation

Data interconnection



SK-E500 / SK-E300 | Computer Nursing Trolley Workstation

Operation instructions



Body fat

Measuring options:
Automatically measure the following functions in sequence:
(Body fat, Body temperature, Arteriosclerosis, Blood pressure, Blood oxygen, ECG, Cholesterol, Blood glucose, Uric Acid, Blood lipids profile)
Manually select the function (you want to measure)

Body fat
Body temperature
Arteriosclerosis
Blood pressure
Blood oxygen
ECG
Cholesterol
Blood glucose
Uric Acid
Blood lipids profile

Blood lipids profile

Measurement Report

Health Management Report

Indicator	Result	Reference	Unit	Evaluation
Body temperature	37.0	36.0-38.0	normal	normal
Uric Acid	4.20	3.00-5.00	normal	normal
Total Cholesterol	5.70	2.80-5.80	normal	normal

Last page Next page Print Export

SK-E500 / SK-E300 | Computer Nursing Trolley Workstation

Functions



Body composition analysis



Temperature
Accuracy: $\pm 0.1^{\circ}\text{C}$



Blood pressure
Accuracy: $\pm 3\text{mmHg}$
($\pm 0.4\text{kpa}$)



Blood oxygen
Accuracy: ± 2



ECG



Body fat



Uric Acid



Total Cholesterol



Blood lipids



Blood glucose

Silent and portable, easy operation

Equipped with medical-grade silent wheels, easy to move Community physical examinations made easy

Risk assessment, health guidance

Online assessment
Chronic disease risk assessment report and health guidance suggestions automatically generated for immediate printing

Large, full-color screen, more comfortable and secure

Large, full-color operation screen assists medical staff

Real-time measurements, synchronous transmission

Ethernet docking, real-time transmission

SK-E500 / SK-E300 | Computer Nursing Trolley Workstation

SK-E500

Community Checkup Assistant



SK-E300

Computer Medical Trolley



SK-E500 / SK-E300 | Computer Nursing Trolley Workstation

SPECIFICATION

Item	Parameter	Specification	SK-E500	SK-E300
Device	Data output interface	LAN network interface	✓	✓
	Voltage range/frequency range	85 to 264V AC / (47Hz/63Hz)	✓	
		220 AC (50Hz/60Hz)		✓
	Rated power	(33W)max	✓	
		(100W) max		✓
	Operating system	Windows 7 32-bit or higher		
Working humidity range (storage temperature range)	5°C to 45°C (-10°C to +60°C)	✓	✓	
ID card reader	Second-generation, ID card reader			
LCD screen	Dimensions	21.5-inch	✓	
		15.6-inch		✓
Body temperature	Decimal places	0.1 °C		
	Body Measuring range	32.0 ~ 42.5°C		
	Objects Measuring range	0 ~ 100°C		
	Accuracy	≤±0.3°C	✓	✓
	Power consumption	≤120mw		
	Measuring Distance	5 ~ 8cm		
Auto off	about 15 seconds			
12-lead ECG	Collection method	12-lead synchronous ECG Wilson		
	power input	d.c5.0V (computer USB port power supply)		
	Sampling frequency	500Hz		
	Scaling voltage	1 mV+5%	✓	✓
	Gain Settings and Accuracy	5 mm/mV (x0.5), 10 mm/mV (x1), 20 mm/mV (x2) shall be available		
	input resistance	≥5.0Ω		
	low frequency characteristics	The time constant is not less than 3.2 s		
	paper speed	At least three gears of 12.5 mm/s, 25 mm/s and 50 mm/s, tolerance range of ±5%		

SK-E500 / SK-E300 | Computer Nursing Trolley Workstation

SPECIFICATION

Item	Parameter	Specification	SK-E500	SK-E300
Blood oxygen	Sensor	Dual Wavelength Light Emitting Diodes	✓	✓
	Wavelength	Red light: 663nm, Infrared light: 890nm		
	Measuring range	35% ~ 100%		
	Maximum average optical output power	≤2mW		
	Tolerance	±2% within the range of 70% to 100%		
	Pulse rate tolerance	30 ~ 250bpm, tolerance is ±2bpm or ±%2, whichever is the largest		
Body Fat Analysis	Equipped device	Sonka	✓	✓
	Measuring system	Multi-frequency, 4-electrode		
	Electrode material	Electroplating material		
	Measuring range	200 ~ 1000Ω		
Blood glucose, uric acid, and total cholesterol	Specimen	fingertip microvascular whole blood	✓	✓
	Detection time	Blood sugar: within 10 seconds, Uric acid: within 15 seconds, Total Cholesterol: within 26 seconds		
	Scope of test	Blood sugar: 20-600mg/dL (1.1-33.3mmol/L), Uric acid: 3-20mg/dL (0.18-1.19mmol/L), Total cholesterol: 100-400mg/dL (2.59-10.35mmol/L)		
	Specimen volume	Blood glucose 0.9uL, total cholesterol 10uL, uric acid 1uL		
	Storage temperature (Operating temperature)	10°C-30°C (10°C-40°C)		
	Relative humidity	<95%		
	Memory capacity	Blood glucose 360 group, total cholesterol 50 group, uric acid 50 group		
Battery type	One 3V (CR2032) button-type lithium battery			
Battery Life	About 1000 times measurement			
Blood lipids	Test type	Calculated values of TC (total cholesterol), HDL (high density lipoprotein cholesterol), TG (triglycerides), and LDL (low density lipoprotein cholesterol)	✓	✓
	Equipment test range	Total cholesterol: 100-400mg/dL (26-10.3mmol/L) Triglycerides: 70-600mg/dL (0.8-6.8mmol/L) High-density lipoprotein cholesterol: 25-80mg/dL (0.6-21mmol/L)		
	Sample size	5μL		
	Test time	Approx. 2min		
	Calibration	Plasma or equivalent product		
	Hct range	35-50%		

SK-E500 / SK-E300 | Computer Nursing Trolley Workstation

SPECIFICATION

Item	Parameter	Specification	SK-E500	SK-E300
Blood pressure monitor (Other models are available)	Display Measurement methods Measuring range Accuracy Pressurize/Relieve save function Fits around the arm power supply Working Environment Storage Environment	Large screen LCD digital Oscillometric Blood pressure: 30 ~ 280mmHg, Pulse rate: 40 to 195 beats/min Pressure ± 3 mmHg, Pulse rate $\pm 5\%$ Use a microelectronic air pump control system for pressurization/depressurization 100 sets of measurement values, including date/time (without loss of memory) 22cm ~ 32cm DC 6V 5°C ~ 40°C, RH $\leq 80\%$, 525-795mmHg -20°C ~ 55°C, RH $\leq 93\%$, 375-795mmHg		✓
	Measuring range Measurement accuracy Screen Applicable circumference range of cuff	Pressure (0 to 300) mmHg [0 to 40kPa], Pulse rate 30 beats/min to 200 beats/min Pressure within ± 2 mmHg (± 0.267 kPa), Pulse rate within $\pm 2\%$ LCD 17cm to 42cm	✓	
Camera	Resolution Encoding type Focus Effective Pixels Wide dynamic Signal to noise ratio Resolution and Frame Rate Zoom Low light	2 million wide dynamic video conferencing cameras MJPEG/YUV auto focus 1920 (horizontal)*1080 (vertical) >120dB >62dB >62dB 5x lossless zoom 0.01Lux@ (F1.2,AGC ON)	✓	✓

SK-E500 / SK-E300 | Computer Nursing Trolley Workstation

SPECIFICATION



Hospitals



Clinics



Health centers